

PART OF THE S.E. 1/4 OF SEC. 4 AND THE N.E. 1/4 OF SEC. 9 T.6N., R.2W., S.L.B. & M.

216

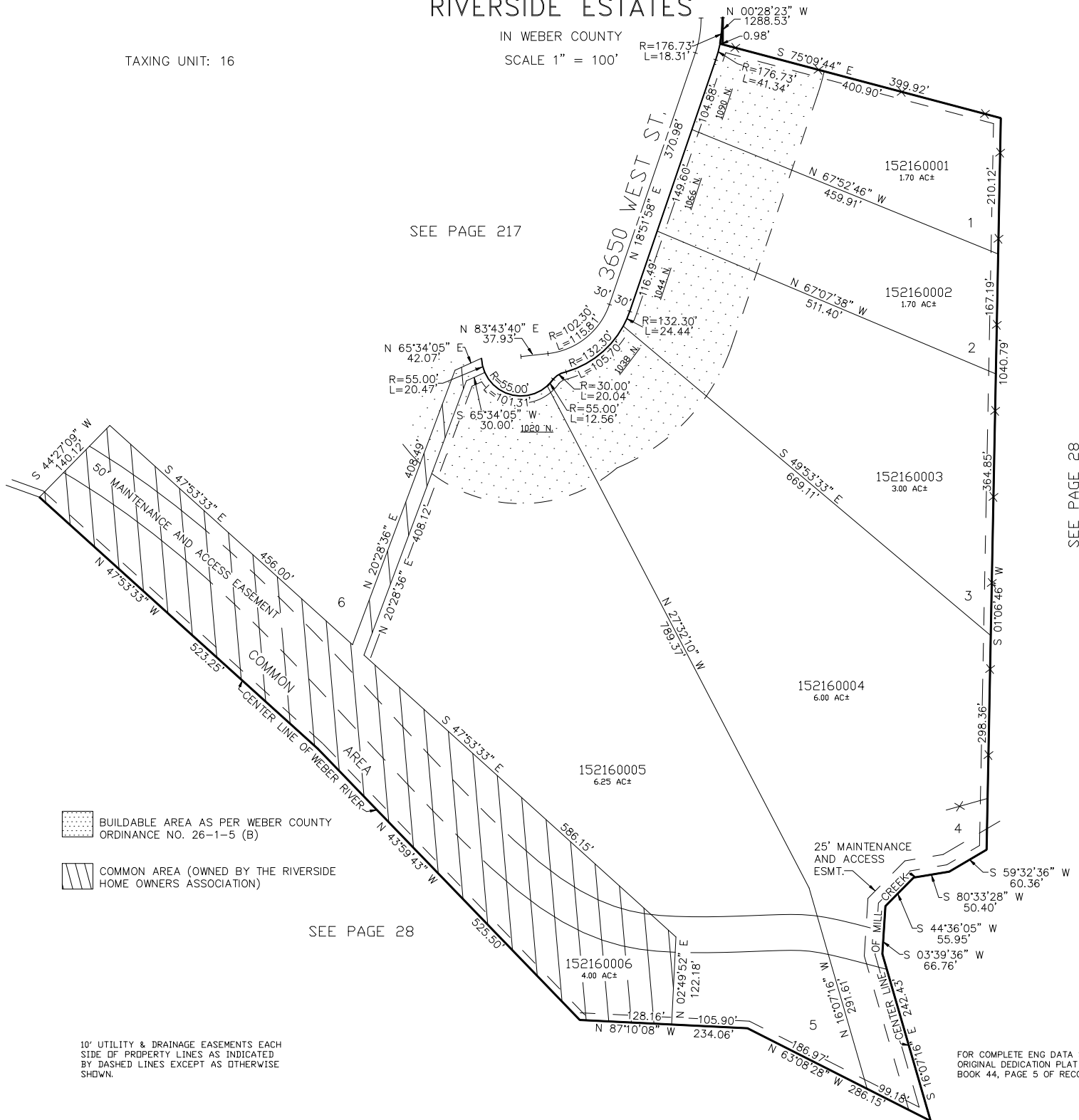
RIVERSIDE ESTATES

IN WEBER COUNTY

TAXING UNIT: 16

SCALE 1" = 100'

SEE PAGE 217



SEE PAGE 28

FOR COMPLETE ENG DATA SEE
ORIGINAL DEDICATION PLAT IN
BOOK 44, PAGE 5 OF RECORDS.